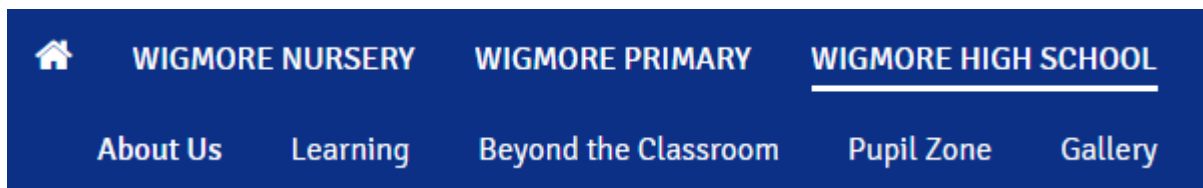
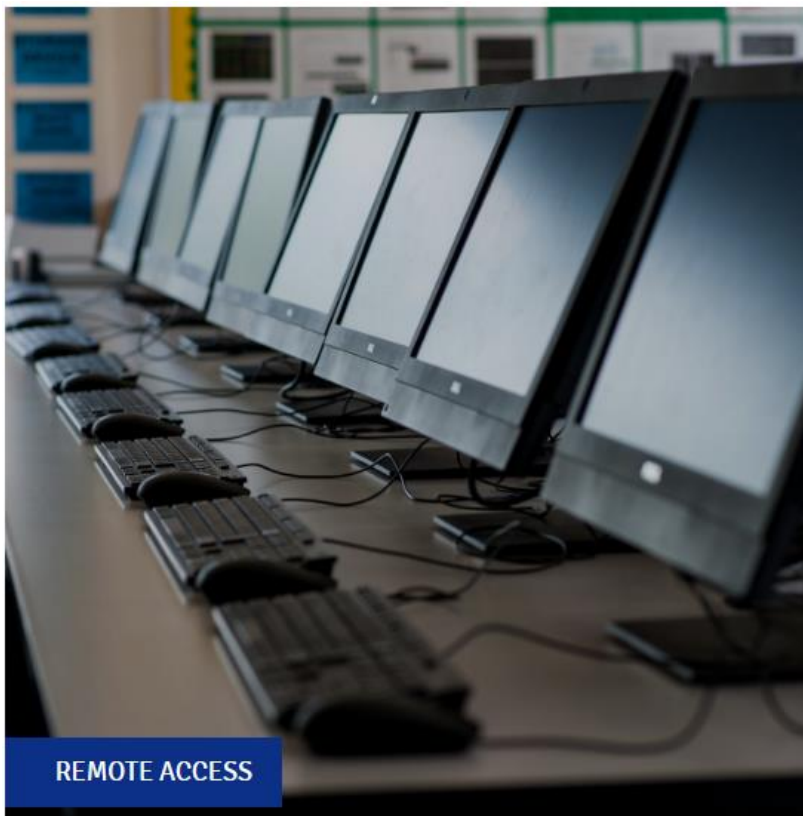


## Remote Access Instructions

- The link to get on to remote access can be found on the Pupil Zone of the High School website



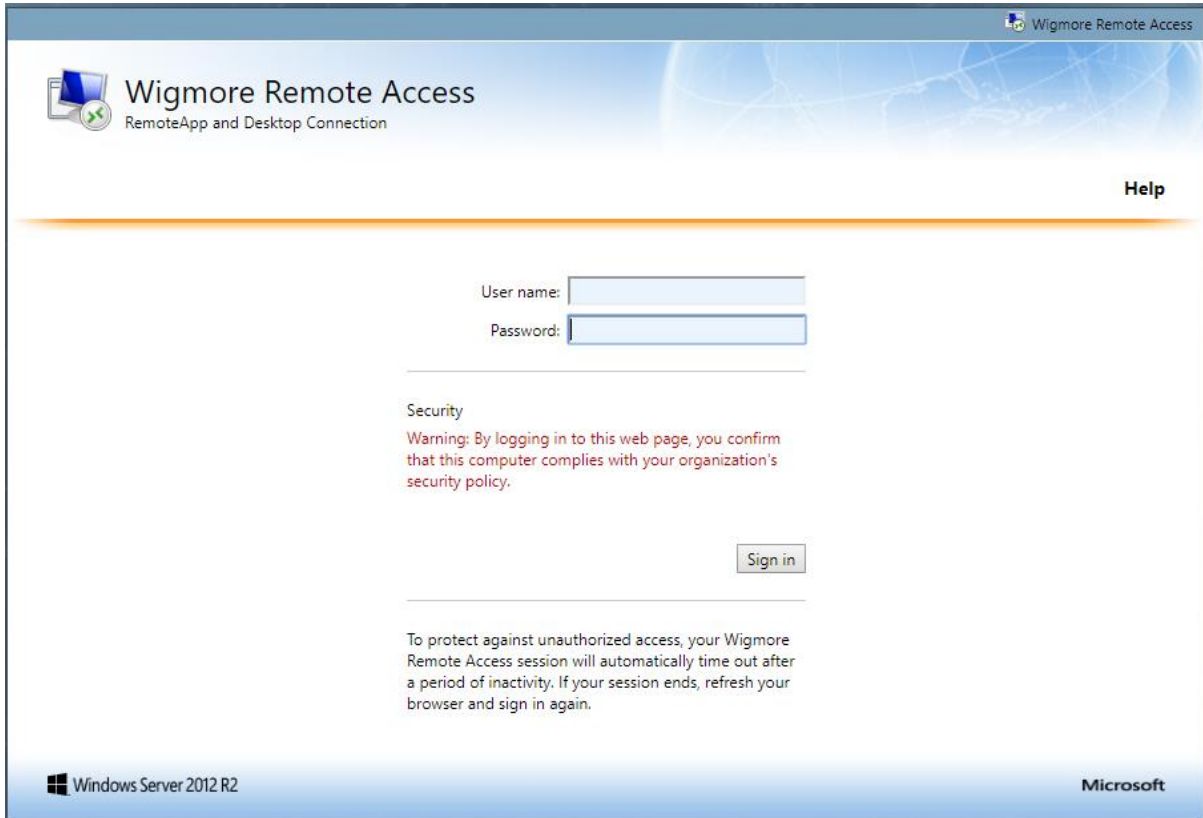
- Click on the Remote Access Link, by clicking on the picture the same as below



- Once on that page you will need to click on the picture of the laptop, that is the same as below



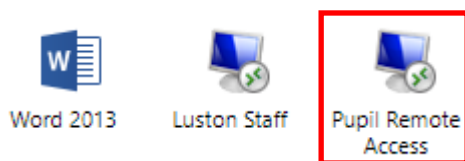
- A screen will then load that looks like this



- In the username box you will need to type: wigmore\username
- Then your password in the password box
- An example of this can be found below

User name: wigmore\jbloggs07  
Password: .....

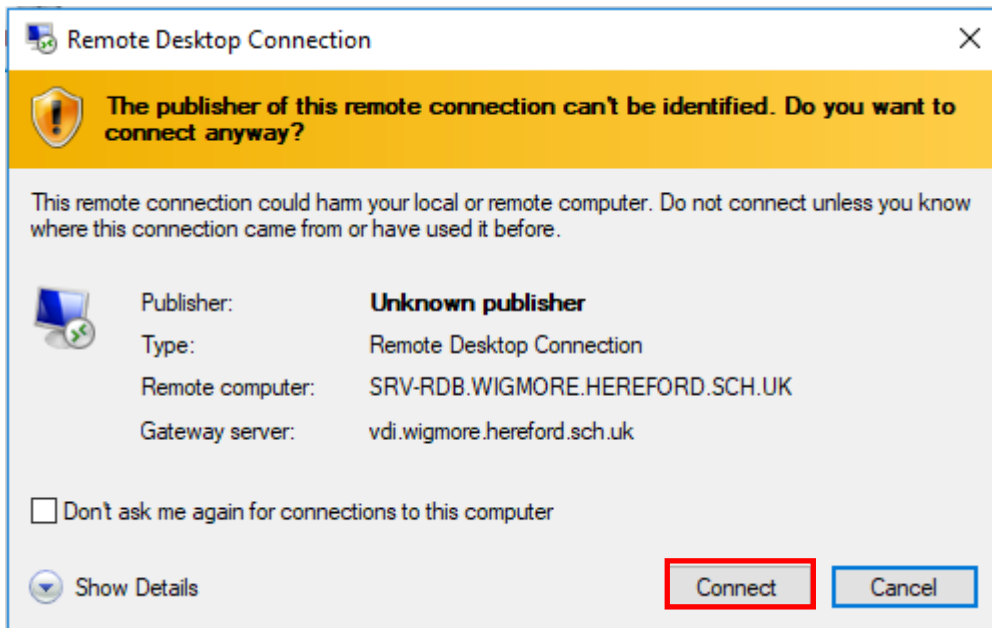
- You will then need to click on the icon that says Pupil Remote Access



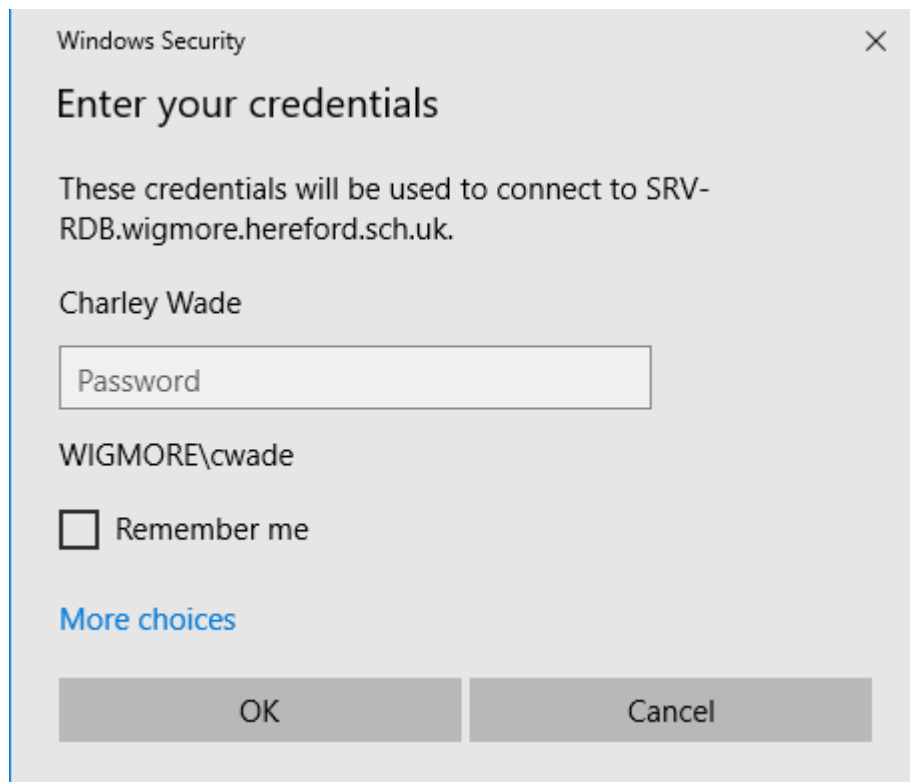
- Clicking this link will start a download at the bottom of the screen, once downloaded you will need to run the download, by clicking on it.



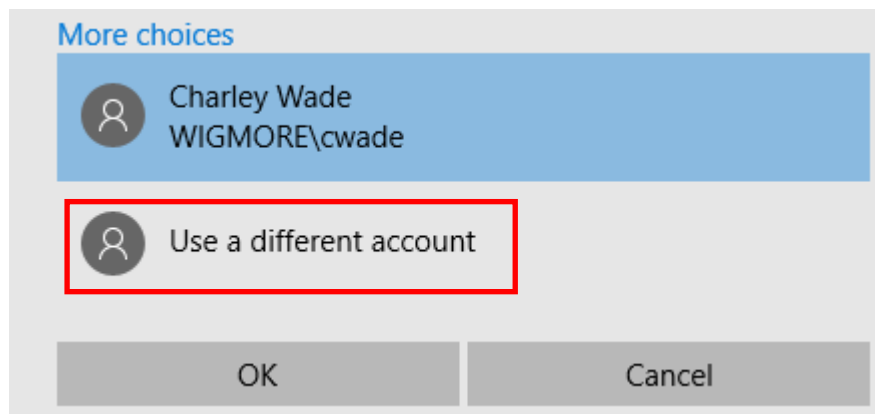
- A box will then pop up and ask you to connect, click connect



- You will then get asked to enter your username and password, **DON'T** enter your password in the password box, but click on **MORE CHOICES**



- Once you have clicked More Choices, click Use a different account



- That will bring up a box to enter a username and password
- In the Username box type: wigmore\username
- Then enter your password, hit enter and then you are in to the Remote Access

